

# SLING

VOL. I

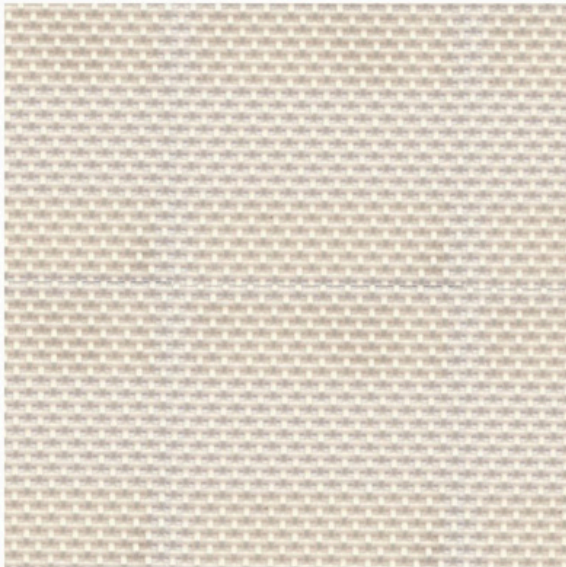


# ... VASCO#R ...

<b>Composition</b>	30% Polyester, 70% PVC
<b>Width [cm]</b>	180
<b>Weight [gr/m<sup>2</sup>]</b> ISO 2286 - 2	530 ± 5%
<b>Breaking Strength [daN/5cm]</b> ISO 1421, Strip Test Method	240   230
<b>Warp   Weft</b>	
<b>Elongation Under Load 20 daN [%]</b> ISO 1421	3.5   2
<b>Warp   Weft</b>	
<b>Abrasion Resistance [rubs]</b> EN ISO 12947 - 2	> 150.000
<b>Tear Strength [daN]</b> DIN 53363	40   40
<b>Warp   Weft</b>	
<b>Color Fastness to Artificial Weathering</b> ISO 105 : B04	8

<b>Color Fastness to Chlorinated Water</b> ISO 105 - E03	4 - 5
<b>Color Fastness to Sea Water</b> ISO 105 - E02	4 - 5
<b>Antifungal</b> BS EN ISO 846 - Method A	Pass
<b>Antibacterial</b> ASTM E 2180	Pass
<b>Extreme Light Stability [hours]</b> ASTM G53	2,000
<b>Flammability*</b> BS EN 1021 - 1 (Cigarette) BS EN 1021 - 2 (Match) NFPA 701	Pass
<b>Extreme Working Temperature</b>	-30°C / +70°C
<b>Oekotex Standard 100</b>	Class II

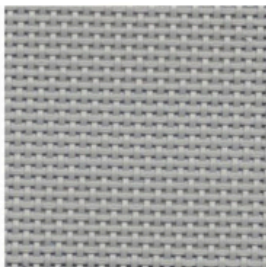
\*Vasco#R - 132 | 1010 FR Standard BS EN 1021 - 1



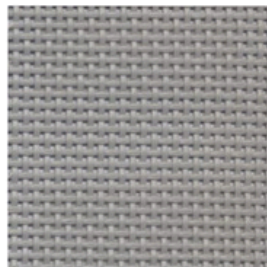
132 | 1010\*



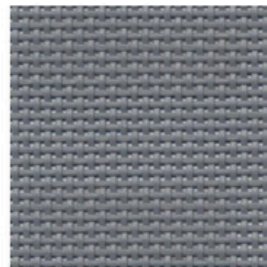
130 | 3030



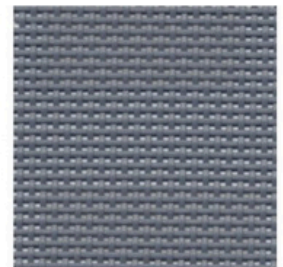
160 | 6060



161 | 6161



162 | 6565

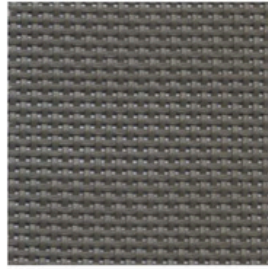


170 | 6262

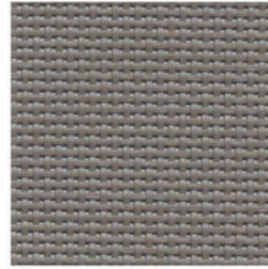




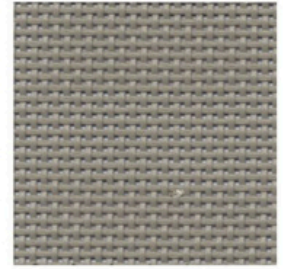
090 | 9090



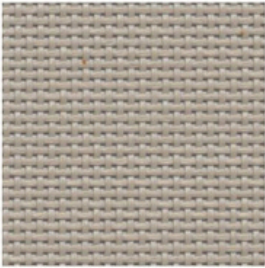
163 | 5555



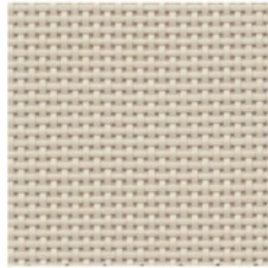
181



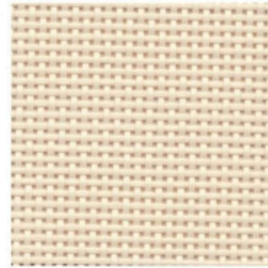
180 | 5151



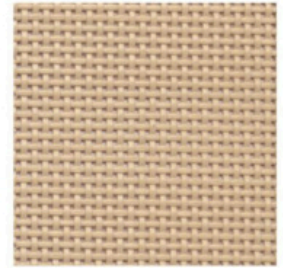
182



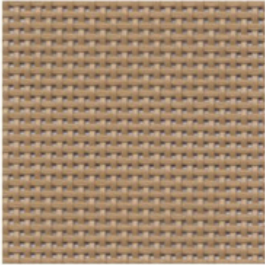
140 | 4040



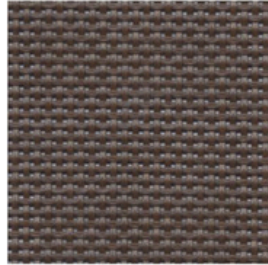
142 | 4242



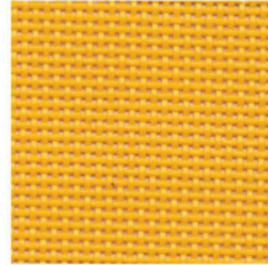
141 | 4545



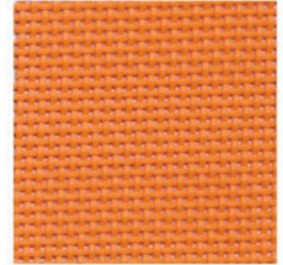
150 | 5050



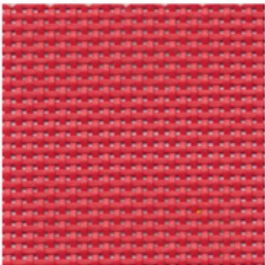
080 | 8080



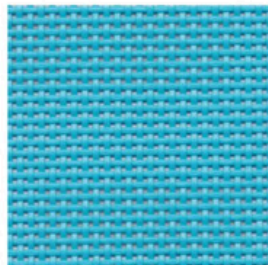
050 | 4848



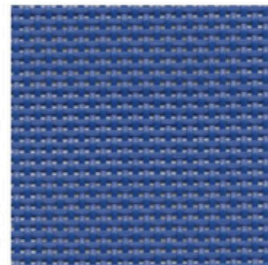
100 | 5353



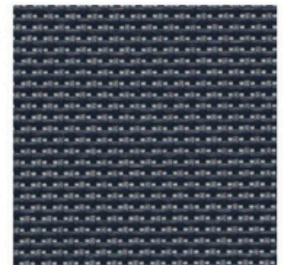
010 | 2222



210 | 7878



120 | 1313



121

FURNITURE / SLING APPLICATIONS



SHEET

DRAIN

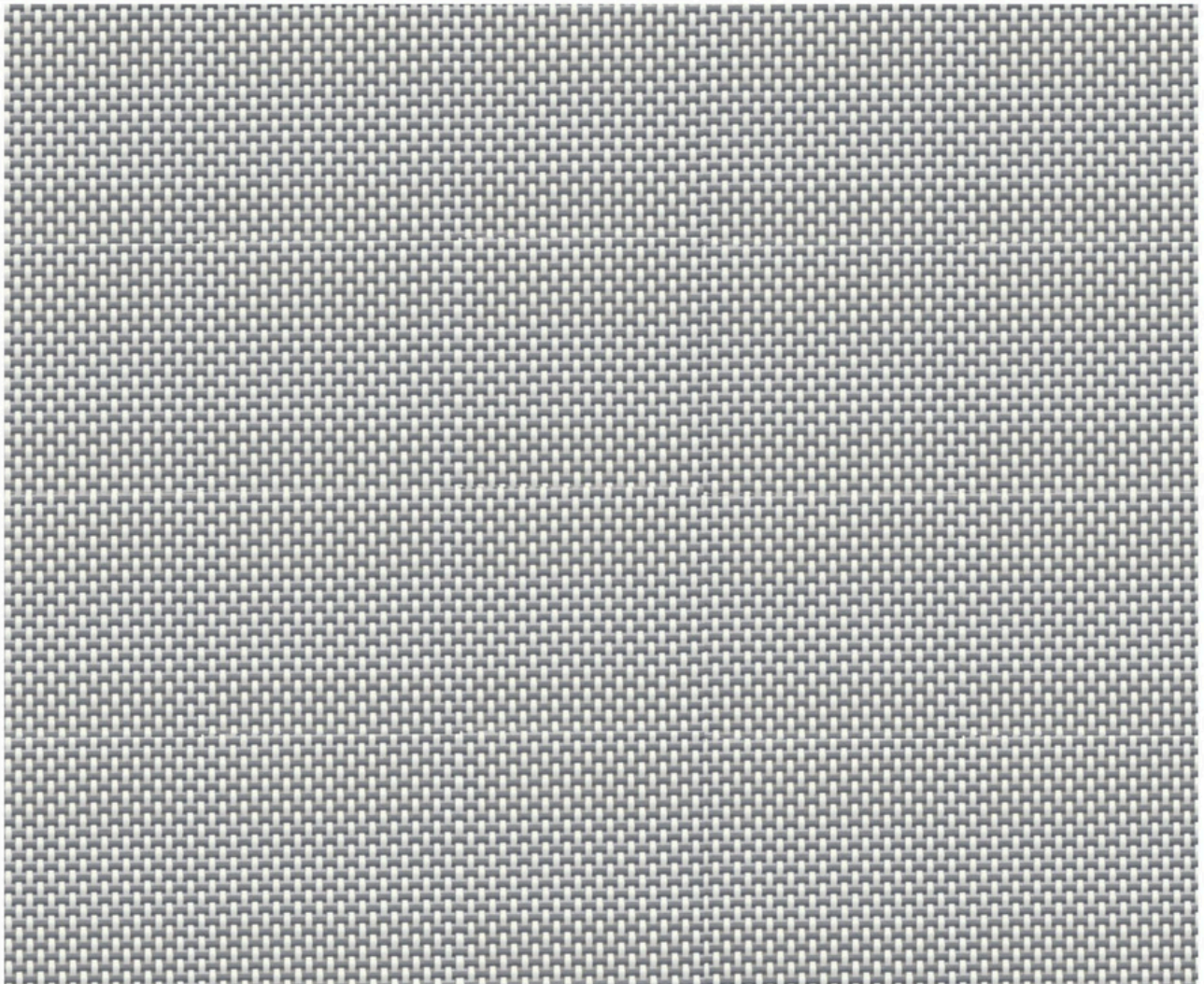
UPHOLSTERY



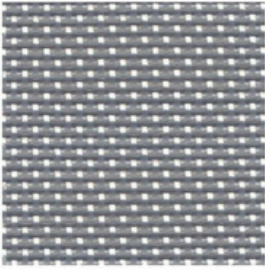
# ... OSTEND#R ...

Composition	30% Polyester, 70% PVC
Width [cm]	180
Weight [gr/m <sup>2</sup> ] <small>ISO 2286 - 2</small>	530 ± 5%
Breaking Strength [daN/5cm] <small>ISO 1421, Strip Test Method</small>	
Warp   Weft	240   230
Elongation Under Load 20 daN [%] <small>ISO 1421</small>	
Warp   Weft	3.5   2
Abrasion Resistance [rubs] <small>EN ISO 12947 - 2</small>	> 150.000
Tear Strength [daN] <small>DIN 53363</small>	
Warp   Weft	40   40
Color Fastness to Artificial Weathering <small>ISO 105 : B04</small>	8

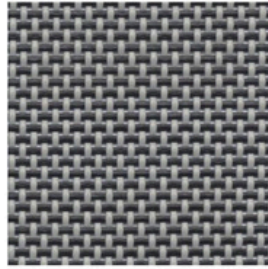
Color Fastness to Chlorinated Water <small>ISO 105 - E03</small>	4 - 5
Color Fastness to Sea Water <small>ISO 105 - E02</small>	4 - 5
Antifungal <small>BS EN ISO 846 - Method A</small>	Pass
Antibacterial <small>ASTM E 2180</small>	Pass
Extreme Light Stability [hours] <small>ASTM G53</small>	2,000
Flammability <small>BS EN 1021 - 1 (Cigarette) BS EN 1021 - 2 (Match) NFPA 701</small>	Pass
Extreme Working Temperature	-30°C / +70°C
Oekotex Standard 100	Class II



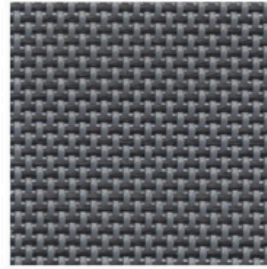




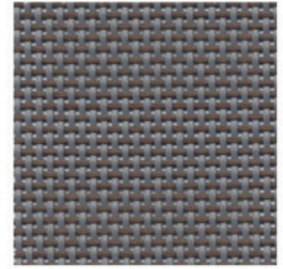
161 | 1065



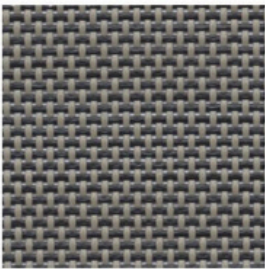
091 | 6090



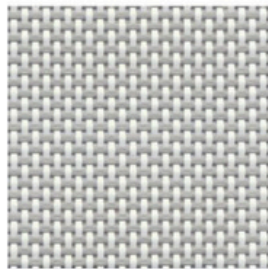
092 | 6590



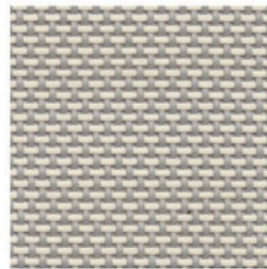
162 | 6580



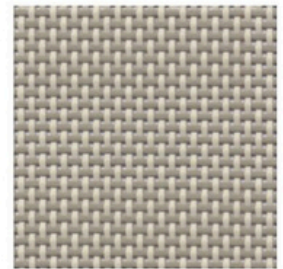
181 | 5190



133 | 3060



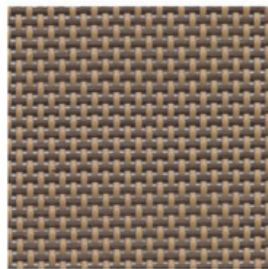
163 | 6142



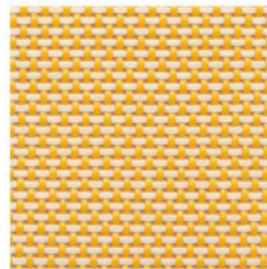
180 | 4051



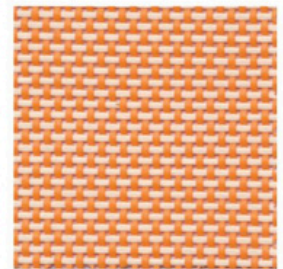
080 | 4080



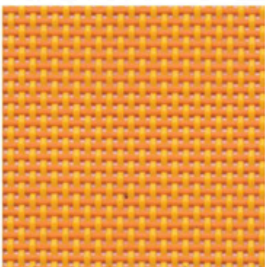
182 | 5080



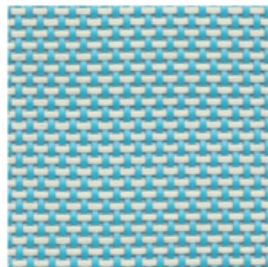
050 | 4842



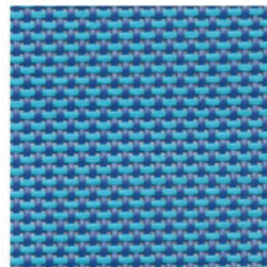
101 | 5342



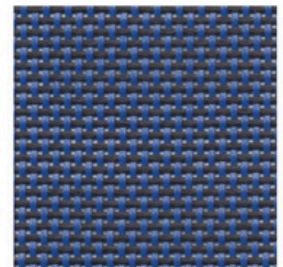
100 | 4853



221 | 7842



040 | 1378



122 | 1390

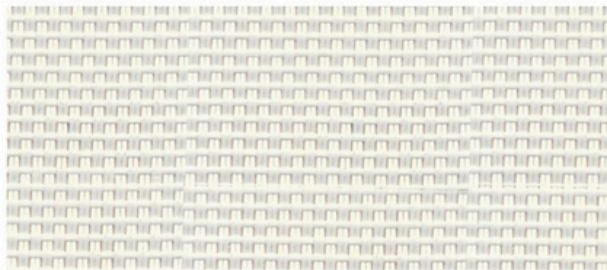
FURNITURE / SLING APPLICATIONS



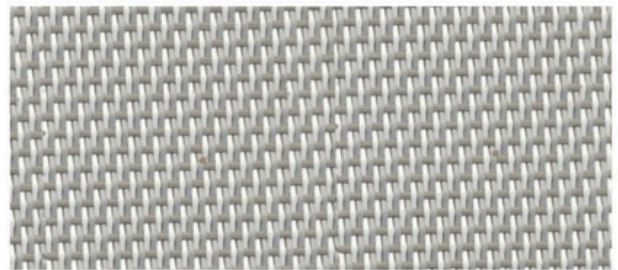
# ... GREYSTONE#R ...

Composition	30% Polyester, 70% PVC
Width [cm]	180
Weight [gr/m <sup>2</sup> ] ISO 2286 - 2	610 ± 5%
Breaking Strength [daN/5cm] ISO 1421, Strip Test Method	
Warp   Weft	250   180
Elongation Under Load 20 daN [%] ISO 1421	
Warp   Weft	2.5   2
Abrasion Resistance [rubs] EN ISO 12947 - 2	> 150.000
Tear Strength [daN] DIN 53363	
Warp   Weft	30   30
Color Fastness to Artificial Weathering ISO 105 : B04	8

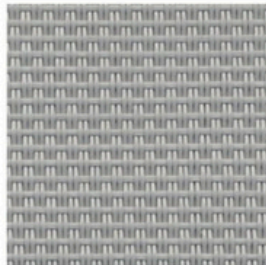
Color Fastness to Chlorinated Water ISO 105 - E03	4 - 5
Color Fastness to Sea Water ISO 105 - E02	4 - 5
Antifungal BS EN ISO 846 - Method A	Pass
Antibacterial ASTM E 2180	Pass
Extreme Light Stability [hours] ASTM G53	2,000
Flammability BS EN 1021 - 1 (Cigarette) BS EN 1021 - 2 (Match) NFPA 701	Pass
Extreme Working Temperature	-30°C / +70°C
Oekotex Standard 100	Class II



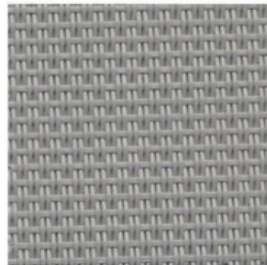
130 | 3030



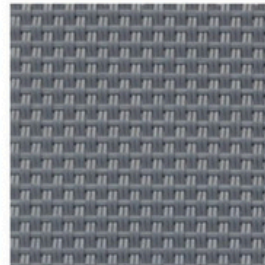
164 | DL01



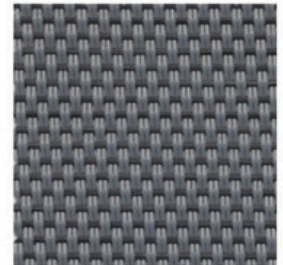
160 | 6060



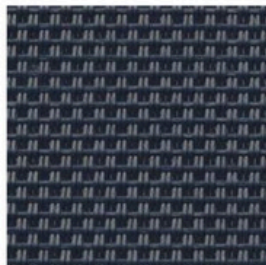
161 | 6161



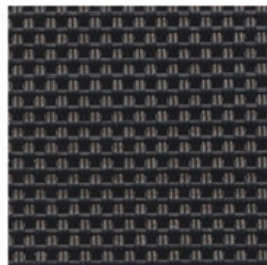
162 | 6565



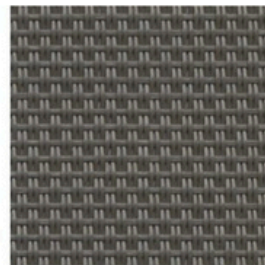
091 | 6590



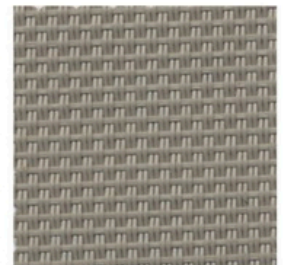
121



090 | 9090



163 | 5555



180 | 5151

FURNITURE / SLING APPLICATIONS





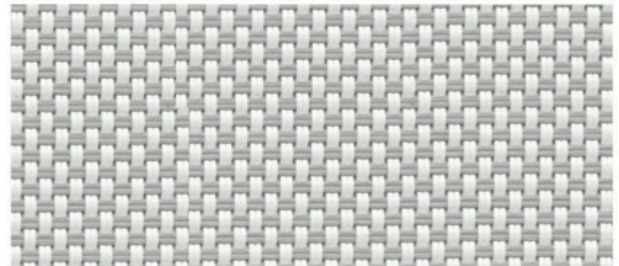
# ... TRAMORE ...

Composition	30% Polyester, 70% PVC
Width [cm]	180
Weight [gr/m <sup>2</sup> ] ISO 2286 - 2	720 ± 5%
Breaking Strength [daN/5cm] ISO 1421, Strip Test Method	
Warp   Weft	370   340
Elongation Under Load 20 daN [%] ISO 1421	
Warp   Weft	3   2
Abrasion Resistance [rubs] EN ISO 12947 - 2	> 150.000
Tear Strength [daN] DIN 53363	
Warp   Weft	60   50
Color Fastness to Artificial Weathering ISO 105 : B04	8

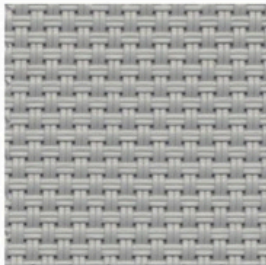
Color Fastness to Chlorinated Water ISO 105 - E03	4 - 5
Color Fastness to Sea Water ISO 105 - E02	4 - 5
Antifungal BS EN ISO 846 - Method A	Pass
Antibacterial ASTM E 2180	Pass
Extreme Light Stability [hours] ASTM G53	2,000
Flammability BS EN 1021 - 1 (Cigarette) BS EN 1021 - 2 (Match) NFPA 701	Pass
Extreme Working Temperature	-30°C / +70°C
Oekotex Standard 100	Class II



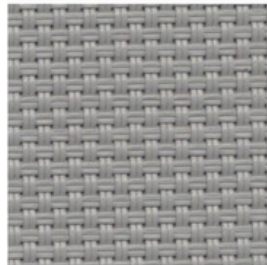
130 | 3030



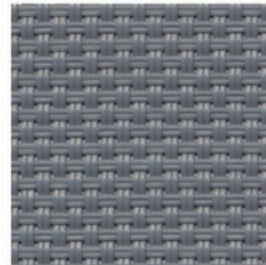
131 | 3060



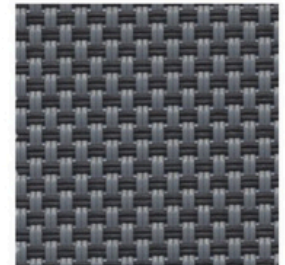
160 | 6060



161 | 6161



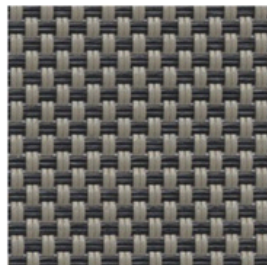
162 | 6565



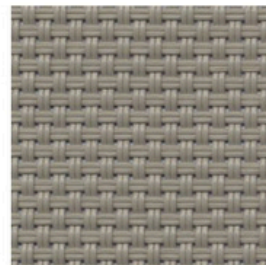
091 | 6590



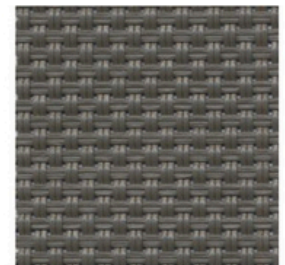
090 | 9090



092 | 5190



180 | 5151



163 | 5555

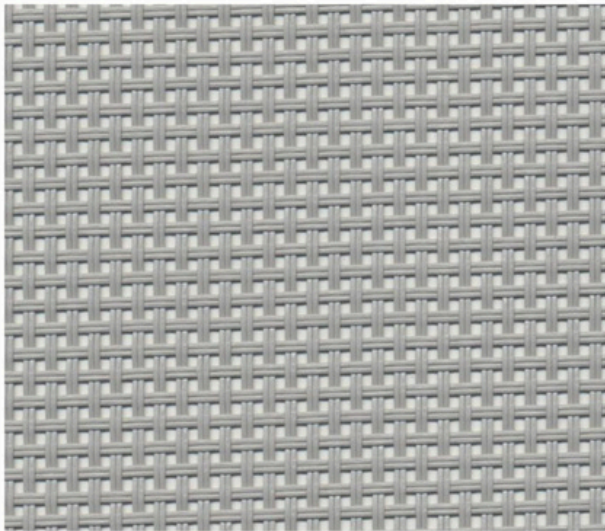
FURNITURE / SLING APPLICATIONS



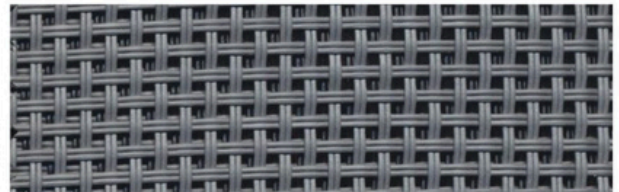
# ... ORETI ...

Composition	30% Polyester, 70% PVC
Width [cm]	180
Weight [gr/m <sup>2</sup> ] <small>ISO 2286 - 2</small>	520 ± 5%
Breaking Strength [daN/5cm] <small>ISO 1421, Strip Test Method</small>	
Warp   Weft	200   200
Elongation Under Load 20 daN [%] <small>ISO 1421</small>	
Warp   Weft	2   2
Abrasion Resistance [rubs] <small>EN ISO 12947 - 2</small>	> 150.000
Tear Strength [daN] <small>DIN 53363</small>	
Warp   Weft	55   45
Color Fastness to Artificial Weathering <small>ISO 105 : B04</small>	8

Color Fastness to Chlorinated Water <small>ISO 105 - E03</small>	4 - 5
Color Fastness to Sea Water <small>ISO 105 - E02</small>	4 - 5
Antifungal <small>BS EN ISO 846 - Method A</small>	Pass
Antibacterial <small>ASTM E 2180</small>	Pass
Extreme Light Stability [hours] <small>ASTM G53</small>	2,000
Flammability <small>BS EN 1021 - 1 (Cigarette) BS EN 1021 - 2 (Match) NFPA 701</small>	Pass
Extreme Working Temperature	-30°C / +70°C
Oekotex Standard 100	Class II



160



162 | 6565



090 | 9090

Sometimes, the outdoor pillows we use can get wet and absorb a lot of water when bad weather comes or when the pillow gets into the water.

This will certainly make the pillow uncomfortable to use because of the water content in it. We need a long time to dry it, but now it's no longer with the Sunproof Sling for Drain.

With special pores and an attractive design, it allows the water absorbed in the pillow to come out on its own without the need for extra effort to dry your favorite pillow.

Sunproof Sling for Drain, another innovation from Ateja.



## WATER RELEASE

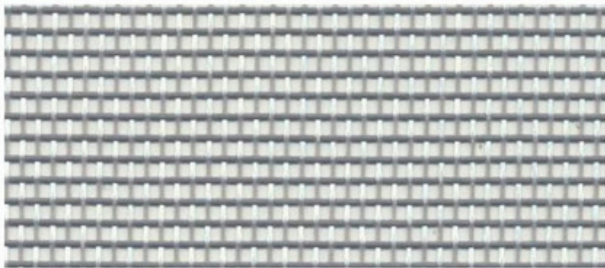




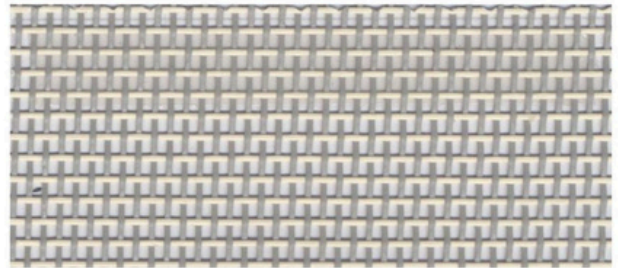
# ... VARCA ...

Composition	30% Polyester, 70% PVC
Width [cm]	180
Weight [gr/m <sup>2</sup> ] ISO 2286 - 2	330 ± 5%
Breaking Strength [daN/5cm] ISO 1421, Strip Test Method	
Warp   Weft	140   100
Elongation Under Load 20 daN [%] ISO 1421	
Warp   Weft	2   2.5
Abrasion Resistance [rubs] EN ISO 12947 - 2	> 150.000
Tear Strength [daN] DIN 53363	
Warp   Weft	40   30
Color Fastness to Artificial Weathering ISO 105 : B04	8

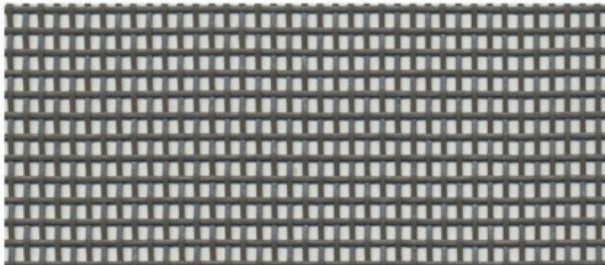
Color Fastness to Chlorinated Water ISO 105 - E03	4 - 5
Color Fastness to Sea Water ISO 105 - E02	4 - 5
Antifungal BS EN ISO 846 - Method A	Pass
Antibacterial ASTM E 2180	Pass
Extreme Light Stability [hours] ASTM G53	2,000
Flammability BS EN 1021 - 1 (Cigarette) BS EN 1021 - 2 (Match) NFPA 701	Pass
Extreme Working Temperature	-30°C / +70°C
Oekotex Standard 100	Class II



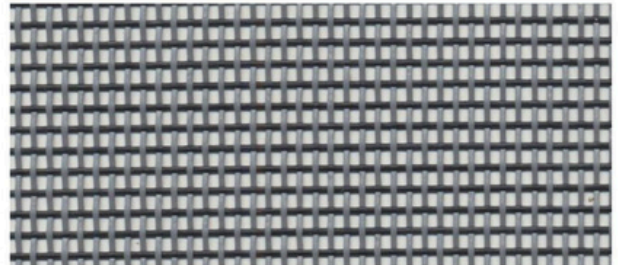
161



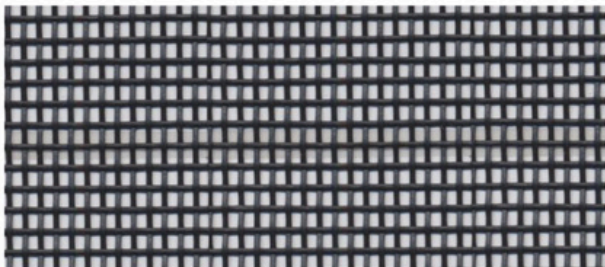
164



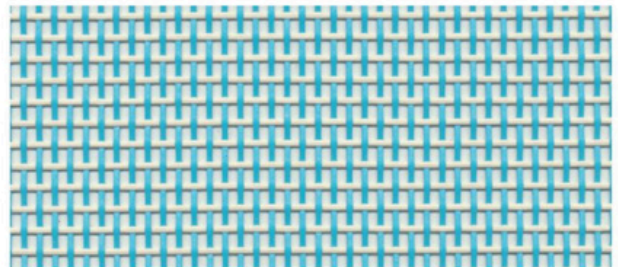
163



092



090 | 9090



221

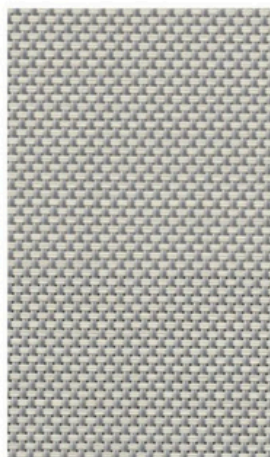
WATER RELEASE



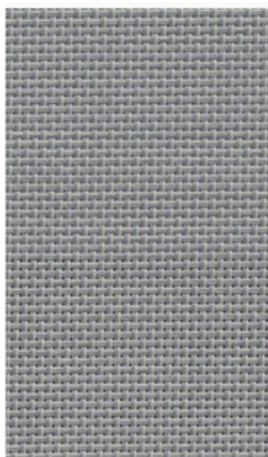
# ... EVANDER ...

Composition	25% Polyester, 75% PVC
Width [cm]	180
Weight [gr/m <sup>2</sup> ] ISO 2286 - 2	420 ± 5%
Tensile Strength [daN/5cm] EN ISO 13934 - 1 Warp   Weft	160   150
Tear Strength [N] EN ISO 13937 - 3 Warp   Weft	70   60
Color Fastness to Rubbing EN ISO 105 - X12 Dry   Wet	4/5   4/5

Abrasion Resistance [rubs] EN ISO 12947 - 2	> 150.000
Seam Slippage pr EN ISO 13936 - 2 Warp   Weft	3   3
Color Fastness to Artificial Weathering ISO 105 : B 04	8
Antifungal BS EN ISO 846 - Method A	Pass
Flammability BS EN 1021-1 (Cigarette)	Pass
Oekotex Standard 100	Class II



130



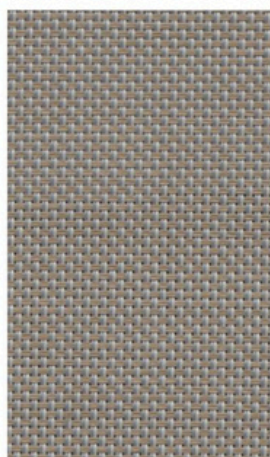
162



161



090



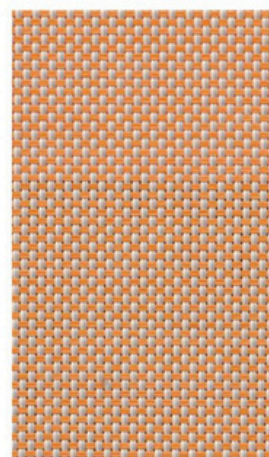
181



231



120



101

UPHOLSTERY / SOFA / CUSHION







Three Years Warranty Under Normal Usage



Ultra Violet Resistance



Flame Retardant



Anti Mould Stain & Fungi



Non Toxic Heavy metal Free



Phthalate Free



VOC Free



Formaldehyde Free



Printable



Breathable, Allow the Air to Flow Through



Easy Maintenance and Washable

# OUTDOOR LIVING. RELIEVE YOUR SENSES.

The lifestyle of modern living has gradually shifted from indoor to outdoor living. Just imagine sitting in your beautiful garden, relaxing on your veranda or dozing off by the pool side while enjoying the cool breeze gently brushing through your skin and admiring the beautiful view of the nature decorated with flower, green pasture and clear blue sky in perfect harmony.

As a dynamic company which focuses on creativity and innovation, we proudly present to you Sunproof Sling, a woven fabric consists of PVC coated polyester yarn which provides incomparable performance : strong, breathable, vibrant and durable (strong color fastness, and excellent resistance to ultra violet rays, mould and tear).

## “Comfort & Breathable”

Sunproof® Sling is breathable. The openness of the sling allows the air to flow through, releasing heat and providing you with the coolness as you relax on the seat.

## “Strength & Durable”

Sunproof® Sling applies special ultraviolet blocking agents which protect the polymer back bone of the PVC coated fiber, therefore it is proven to have the strong ability to withstand the damaging effect of sunlight, wind, rain, and humidity.

## “Excellent Color Fastness & Long Lasting”

Sunproof® Sling is uses excellent quality of raw material. This is to ensure that when it is exposed to sun light or rain for an extended period, it will not fade or lose the intensity of its color. It is long lasting.

## “Resistance to Humid Environment & Staying Fresh”

Sunproof® Sling is carefully treated to inhibit microbial development, mould stain and algae infestation, even in the moist environment ; keeping the fabric fresh and clean.

## “Easy Maintenance & Sustainable”

Sunproof® Sling is carefully processed and has gone through a special treatment to resist stain, oil, and water. It is easily maintained. You can simply clean it with a wet sponge or a damp cloth with a mild detergent. Then just let it to dry thoroughly.



ISO 9001



ISO 14001

OEKO-TEX®  
CONFIDENCE IN TEXTILES  
STANDARD 100  
BD015 173825 TESTEX  
Tested for harmful substances  
www.oeko-tex.com/standard100



# HORESTCO

Jalan Mantingan, Desa Langon RT 12 RW 05, Kecamatan Tahunan,  
Kabupaten Jepara, Central Java, 59425, INDONESIA

SCAN  
ME



www.sunproof.co.id



## MORE CATALOGUE

export@horestco.com

www.horestco.com

628551065899